

Pumps for the Shipbuilding Industry



When the pumps stop working, everything on board shuts down

Pumps are the life of a ship. That's why we make the best pumps. For SPX FLOW, the best pump represents both the right price and the shortest delivery time, which precisely meets the specifications demanded. This requires a constant feedback from the marine market and a swift translation into sound and reliable applications. Our design and manufacturing facilities are fully equipped to do just this.

The Combi system

The SPX FLOW Johnson Pump brand Combi system is a modular program that comprises a range of vertical and horizontal centrifugal pumps. One of the major advantages of the system is the ability to interchange components between the various models.

This means a considerable reduction in the stock of spare parts to be maintained by the customer. For maintenance staff the modular system also means significant time gains.

Whether you're looking to upgrade an existing vessel or specifying equipment for a new ship - SPX FLOW has the right solution for you.

We manufacture equipment for marine and shipbuilding applications including ship bunkering, bilge and ballast, sea water intake, main engine cooling and many more.

Explore the endless solutions that SPX FLOW has to offer. You're sure to find answers that can reduce costs, improve equipment efficiency, and enhance performance.



CombiPrime Vertical & Horizontal

Vertical & Horizontal self-priming pump, hydraulics according to EN733

General service, bilge, ballast and fire fighting applications

Maximum ratings

Capacity	500 m ³ /h (H)	2201 GPM
	800 m ³ /h (V)	3522 GPM
Head	100 m	328 ft.
Working press.	10 bar	145 PSI
Temperature	80°C	176°F
Speed		3600 rpm

Materials: cast iron, bronze

Features

- Built-in vacuum pump operating on liquid ring principle
- Large air capacity, i.e. short priming time, even for large suction lines
- No compressed air required
- CombiPrime V vertical, compact build
- Variable (8) positions of suction bend (CombiPrime V)

CombiLine

Inline close-coupled circulation pump on extended shaft motor

Circulating pump for heating and cooling systems

Maximum ratings

Capacity	500 m ³ /h	2201 GPM
Head	35 m	115 ft.
Pressure	10 bar	145 PSI
Temperature	140°C	284°F
Speed		1800 rpm

Materials: cast iron

Features

- Specially designed suction bend
- Improved impeller design
- Ample hydraulic application range
- Excellent hydraulic performance
- In-line design
- Horizontal or vertical installation

CombiFlex, -Universal, -Bloc

Vertical pump variable position suction bend, hydraulics according to EN733

General service and fire fighting applications

Maximum ratings

Capacity	1500 m ³ /h	6604 GPM
Head	140 m	459 ft.
Working press.	10 bar	145 PSI
Temperature	200°C	392°F
Speed		3600 rpm

Materials: cast iron, bronze

Features

- Many mounting options (floor-, bulkhead-, wall-mounting)
- 8 positions possible between suction and delivery connections
- Top-pull-out construction in combination with spacer coupling for easy maintenance
- Bearing bracket option allows range of shaft-seals
- Compact build

CombiNorm

Horizontal centrifugal pump according to EN733 with electric motor built on common base plate

General service, cooling or fire fighting applications

Maximum ratings

Capacity	1500 m ³ /h	6604 GPM
Head	100 m	328 ft.
Working press.	16 bar (10 bar)	232 PSI (145 PSI)
Temperature	200°C	392°F
Speed		3600 rpm

Materials: cast iron, nodular cast iron, bronze

Features

- Back-pull-out construction for easy maintenance
- Many shaft-seal, bearing-design and material options
- Modular design and interchangeability of parts

Multistage

Horizontal (MCH), self-priming (MCHZ) and vertical (MCV) high pressure multistage pumps

General service and engine room

Maximum ratings

Capacity	100 m ³ /h	440 GPM
Head	340 m	1115 ft.
Working press.	40 bar	580 PSI
Temperature	120°C	248°F (MCV&MCHZ),
	150°C	302°F (MCH)
Speed		3600 rpm

Materials: cast iron, bronze

Features

- Rigid, reliable construction
- MCHZ liquid ring self-priming version
- Compact build
- Modular design and interchangeability of parts

FreFlow

Self priming centrifugal pump

Corrosive and slightly contaminated liquids containing gas or air such as sea, fresh, bilge and fire-fighting water

Maximum ratings

Capacity	350 m ³ /h	1541 GPM
Head	80 m	262 ft.
Working press.	9 bar	130 PSI
Temperature	95°C	203°F
Speed		3600 rpm

Materials: cast iron, bronze, stainless steel

Features

- Excellent suction ability up to 7 meters lift
- Heavy-duty, dust-tight, grease-lubricated bearing
- Inspection hatch for easy maintenance (bigger types)
- Modular design
- Available in compact monobloc design

CombiLineBloc

Inline close-coupled circulation pump



Circulating pump for HVAC - and cooling systems

Maximum ratings

Capacity 450 m³/h
1981 GPM
Head 100 m 328 ft.
Pressure 10 bar
145 PSI
Temperature 120°C 248°F
Speed 3600 rpm

Materials: cast iron, bronze

Features

- Standard mechanical shaft seal EN12756 (DIN 24960)
- In-line design
- Stub shaft for standard IEC flange motors
- Back-Pull-Out construction for easy maintenance
- Low NPSH through unique suction bend design
- Horizontal or vertical installation

CombiBloc

Horizontal centrifugal pump in monobloc design with standard IEC flange motor



Ideal pumps for engine rooms in HVAC- and chiller units and in general duty systems.

Maximum ratings

Capacity 850 m³/h
3742 GPM
Head 105 m 344 ft.
Working press. 10 bar 145 PSI
Temperature 110°C 230°F
Speed 3600 rpm

Materials: cast iron, bronze, stainless steel

Features

- Standard mechanical shaft seal according to EN 12756 (DIN 24960)
- Back-pull-out construction for easy maintenance
- Self-venting pump housing
- Can be mounted horizontally or vertically (wall-mounting)
- High pump efficiency
- Compact build

CombiChem

Heavy duty chemical pump according to ISO5199 and EN22858



General service, boiler feed, exhaust gas and tank cleaning applications

Maximum ratings

Capacity 800 m³/h
3522 GPM
Head 160 m 525 ft.
Working press. 16 bar (10 bar)
232 PSI (145 PSI)
Temperature 200°C 392°F
Speed 3600 rpm

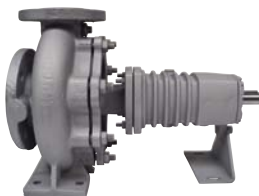
Materials: cast iron, nodular cast iron, bronze, stainless steel

Features

- Mechanical seals according to EN 12756 (DIN 24960)
- Back-pull-out construction for easy maintenance
- Many shaft-seal, bearing-design and material options
- Modular design and interchangeability of parts
- Mag-driven CombiMag is 100% leakproof

CombiTherm

Horizontal centrifugal pump for thermal oil (DIN 4754) and hot water applications (ratings and dimensions to EN 733)



Fuel tank heaters and fuel preheating, cargo and product heating, steam generation

Maximum ratings

Capacity 400 m³/h
1761 GPM
Head 160 m 525 ft.
Working press. 16 bar
232 PSI
Temperature Thermal oil 350°C
662°F
Hot water 190°C
374°F
Speed 3600 rpm

Materials: nodular cast iron

Features

- Seal and bearings located away from impeller, no external cooling required
- Wear-reducing back vanes and labyrinth
- Modular design and interchangeability of parts
- Back-pull-out construction for easy maintenance

TopGear

Heavy duty self-priming internal gear pump range



Cargo transfer, fuel and oil transfer

Maximum ratings

Capacity 250 m³/h 1100 GPM
Working pres. 16 bar 232 PSI
Temperature 300°C 572°F
Viscosity 80 000 mPas/cP

Materials: cast iron, nodular cast iron, stainless steel, cast steel

Features

- Front and Back-Pull-Out
- High and low viscos products
- Simple design
- Easy maintenance

The right pumps in the right place

SPX FLOW's R&D department developed the Hydraulic Investigator selection program for selecting the right size of centrifugal pump. This program translates the required QH-value into the hydraulic most suitable for the intended objective. SPX FLOW has its own approved test beds on which we can carry out tests for QHP, NPSH, vibration and noise level. We can carry out tests in accordance with various inspection agencies such as Lloyds RoS, GL, DNV, ABS, RINA etc.

We can provide you the total pump package for:

Floating Production Systems

Bilge & Ballast

Engine Cooling

Fire Fighting

General Service

HVAC

Oil Systems

Potable Water

Sewage



Visit www.spxflow.com for more information about our offerings for filtration, dehydration, heat exchange and desalination from our brands APV, Clyde Union, Dolinger, Jemaco, Plenty and Vokes

Pumps for the
Shipbuilding
Industry

SPXFLOW

Your local contact:

www.spxflow.com/en/johnson-pump/where-to-buy/

SPX FLOW TECHNOLOGY ASSEN B.V.

P.O. Box 9 - 9400 AA Assen

Dr. A.F. Philipsweg 51 - 9403 AD Assen

The Netherlands

P: +31(0) 592 37 67 67

F: +31(0) 592 37 67 60

E: johnson-pump.nl.support@spxflow.com

For more information about our worldwide locations, approvals, certifications, and local representatives, please visit www.spxflow.com and www.johnson-pump.com.

SPX FLOW, Inc. reserves the right to incorporate our latest design and material changes without notice or obligation. Design features, materials of construction and dimensional data, as described in this bulletin, are provided for your information only and should not be relied upon unless confirmed in writing.

JP_650_GB Version: 03/2016 Issued: 03/2016

COPYRIGHT © 2016 SPX FLOW, Inc.