

Chocolate

Sweet move
for Johnson Pump



Whether you pump jam or highly concentrated dissolved sugar, milk chocolate with whole nuts or jelly babies, SPX can provide the solution to transport various liquids you handle.

With many years of experience working in areas demanding gentle product handling and hygienic design SPX has a variety of pumping options to suit your needs.

What is stirring you?



Based in Charlotte, North Carolina, SPX Corporation (NYSE: SPW) is a global Fortune 500 multi-industry manufacturing leader. For more information, please visit www.spx.com.

Cocoa liquor	Waffle dough	Honey	Toffees
Lecithin	Sorbitol	Flavours	Gelatine
Cocoa butter	White chocolate	Vegetable oil	Fudge
Chocolate	Caramels	Pudding	Melange
Milk	Condensed milk	Nougat	Glucose syrup
Emulsifying agents	Gum Arabic	Marmalade	Cream
Butter	Coverings	Dissolved sugar	Fondant

We will move it!



SPECIAL PUMP DESIGN FOR SUGAR CONFECTIONERY AND CHOCOLATE MANUFACTURE

- With the option of a variety of different ranges of positive displacement pumps.
- Choice of specific materials of construction.
- Hygienic pump design for CIP and SIP or manual cleaning.
- Compact pump units, tailored to your specific needs.

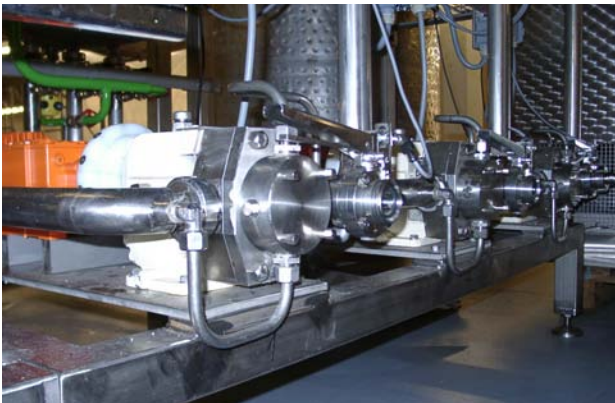
REVERSIBLE PUMPS ON LOADING AND UNLOADING DUTIES

- Simplified pipe works.
- Fewer valves.
- Strips lines.
- Self priming available.
- Wide range of applications by variable speed.
- Constant and smooth flow.
- Bi-rotational.



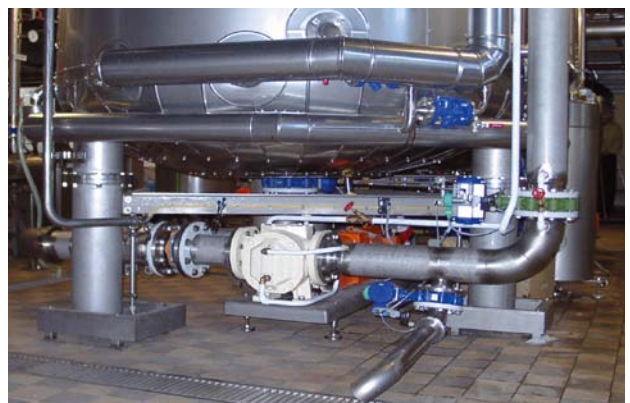
PUMPING OF HIGH AND LOW VISCOUS LIQUIDS

- Proportional pumping over a wide range of viscosity.
- Variable speed and regulation for special capacity.
- Gentle product handling.
- Low energy costs and a high level of hydraulic efficiency.
- Pumping final products with solid particles like fruits and cereals.



SOLVING PROBLEMS FOR YOUR SYSTEM

- Easily serviced maintained with long intervals.
- Long life components for high availability.
- Competent advice and consultation.
- SPX can advise on system design to ensure that you obtain the lowest life cycle cost.
- SPX has always the right solution for your specific demands.



Chocolate



Sweet move
for Johnson Pump

Your local contact:

http://www.johnson-pump.com/JPIndustry/JohnsonPump_distributors.htm

SPX FLOW TECHNOLOGY

Evenbroekveld 2-6, BE-9420 Erpe-Mere, BELGIUM

T: +32 (0)53 60 27 15

F: +32 (0)53 60 27 01

E: johnson-pump.be@spx.com

SPX reserves the right to incorporate our latest design and material changes without notice or obligation.

Design features, materials of construction and dimensional data, as described in this bulletin, are provided for your information only and should not be relied upon unless confirmed in writing. Please contact your local sales representative for product availability in your region. For more information visit www.spx.com/en/johnson-pump

The green ">" is a trademark of SPX Corporation, Inc..

ISSUED 01/2013 Chocolate EN

COPYRIGHT © 2013 SPX Corporation