

SPXFLOW

TopWing

ULTRA-HYGIENIC ROTARY LOBE PUMPS



Johnson Pump®

The TopWing pump is designed for ultra-hygienic applications and is very easy to clean both by CIP and by SIP. The pump is extremely rigid built for long durable operation and easy maintenance.

The complete pump is made of stainless steel with smooth surface on all product-contact parts.

The pump range is approved for EHEDG, 3-A and a variety of other certificates or validation documents are available for the most demanding needs.

With less agitation and shear TopWing can handle delicate liquids containing both soft and hard particles without product degradation.

TopWing is the most modern and strongest rotary lobe pump in the market today without compromising hygiene.

Based in Charlotte, North Carolina, SPX FLOW (NYSE: FLOW) is a multi-industry manufacturing company with operations in more than 35 markets worldwide. SPX FLOW's innovative, world-class products and highly-engineered solutions are helping to meet the needs of a constantly developing world and growing global population. You'll find our innovative solutions in everything from dairy plants and power plants to oil and gas pipelines, and the power grid. SPX FLOW is really everywhere you look.

We help our customers around the globe expand and enhance their food and beverage, power and energy and industrial production processes. For more information, please visit www.spxflow.com

TopWing Ultra-Hygienic Rotary Lobe Pumps

ULTRA-HYGIENIC DESIGN

- Self-draining rotor case in vertical position
- Self-draining mechanical seals inside the rotor case
- Clean O-ring position
- 316 L stainless steel body and cover
- Smooth standard surface. Electro-polished finish as option
- Easy to clean – CIP, SIP or manually
- Withstands rapid temperature changes and accommodates harsh CIP/SIP-cycles.
- EHEDG and 3-A options

VALIDATED AND CERTIFIED

- Easy to validate for Ultra-hygienic applications
- Package of certificates available as option, as example:
 - Flow and pressure tests
 - Cleanability certificates as EHEDG and 3-A
 - Material certificates as 3.1, FDA, USP Class VI and AFO
 - Certificates of surface roughness, welding, electro- polishing
 - ATEX certificates (hazardous zone)
 - Quality (ISO 9001) and environmental (ISO 14001) certificates

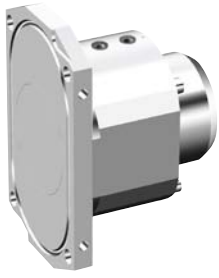
TROUBLE-FREE OPERATION

- Duplex stainless steel in rotors, shafts and retainers
 - Strong assembly
 - Low thermal expansion
 - High corrosion resistance
 - Harder material
- Complete pump in stainless steel
 - Designed for difficult external environments
 - Easy to clean externally without risk for corrosion
- Heavy-duty construction
 - Maximized duplex shaft and bearing diameter/tight bearing position
 - Increased lifetime on bearings and seals

EASY MAINTENANCE

- Change of shaft seal without disassembling the rotorcase
- Heavy duty bearing design – pre-loaded taper roller bearings without shimming





SPECIAL APPLICATION OPTIONS

- Rectangular inlet for high viscosity products and considerably improved inlet conditions
- Thermal jacket to provide a constant temperature level within the pump
- Relief valve to secure against too high pressures. Options for automated CIP cycles are available

DESIGNED FOR DIFFICULT EXTERNAL ENVIRONMENTS

- Water resistant gear case with special seals to minimize water intrusion
- Air breather of stainless steel with back valve and labyrinth
- Complete pump manufactured in stainless steel – no corrosion, no painting

ROTOR OPTIONS

- Bi-wing rotors
 - Smooth performance with minimal damage of pumped media having soft particles such as fruits
 - Low or no pulsation when pumping viscous liquids
- Multi-lobe rotors
 - Low noise level at higher speeds
 - Low pulsation when pumping low viscous liquids
 - Low NPSHr
 - Reduced friction and power losses



TECHNICAL DATA - STANDARD CLEARANCE CLASS

PUMP TYPE	DISPLACEMENT (US GAL/REV)	MAX CAPACITY (GPM)	PORT SIZE (INCHES)	MAX WORKING PRESSURE (PSI)	MAX SPEED (RPM)
TW1/0041	0.011	15	1	220	1400
TW1/0082	0.022	31	1	100	1400
TW2/0171	0.045	54	1.5	220	1200
TW2/0343	0.091	109	2	100	1200
TW3/0537	0.142	142	2	220	1000
TW3/1100	0.291	291	3	100	1000
TW4/1629	0.43	344	3	220	800
TW4/3257	0.86	688	4	100	800

Typical product applications

DAIRY

Milk, Yogurt, Cream, Curds and whey, Skimmed milk, Butter, Cottage cheese, Melted cheese



DRINKS & BEVERAGE

Fruit juice, Yeast, Cider and wine, Liquid sugar, Glucose, Spirits, Extracts, Beer



FOOD & CONFECTIONERY

Fruit preserves, Baby food, Soups and sauces, Chocolate, Sausage meat, Vegetable oils, Batter, Dough, Jam, Egg products, Prepared food, Soups, Syrup, Liquid sugar, Fondant, Ketchup, Mustard, Candy paste



PHARMACEUTICAL, MEDICINE AND BIOPROCESSING

Ultra filtration, Blood, Plasma, Enzymes, Buffers, Coating solutions, Fermentation circulation, Alcohol, Sugar solutions, Pill paste, Dragee solutions, Nutrients



COSMETICS & PERSONAL CARE

Toothpaste, Shampoos, Gels, Creams, Soap, Lotions, Cosmetics, Hair conditioners, Extracts



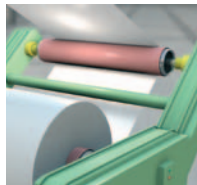
CHEMICAL

Paint, Resins, Oil additives, Polymer, Glue, Ink, Gelatine



PULP & PAPER

Pine oil, Soap, Starch, Lignin, Coating, Slurry, Clay, Green liquor mud, Sludge



TopWing

Ultra-Hygienic Rotary Lobe Pumps

SPXFLOW

FOR YOUR LOCAL REPRESENTATIVE:

<http://www.spx.com/en/johnson-pump/where-to-buy/>

SPX FLOW TECHNOLOGY POLAND SP. Z O.O.

Grunwaldzka 229, PL-85-451 Bydgoszcz, Poland

www.spxflow.com ▪ www.johnson-pump.com

P: +48 52 5259 900

F: +48 52 5259 9909

E: ftbydgoszcz.office@spxflow.com

SPX FLOW TECHNOLOGY

1625 Hunter Road, Suite B

Hanover Park, Illinois, 60133, USA

Phone: +1 (847) 671 7867

E-Mail: johnson-pump.americas.industrial@spxflow.com

SPX FLOW reserves the right to incorporate our latest design and material changes without notice or obligation.

Design features, materials of construction and dimensional data, as described in this bulletin, are provided for your information only and should not be relied upon unless confirmed in writing. Please contact your local sales representative for product availability in your region. For more information visit www.spxflow.com and www.johnson-pump.com.

The green "y" and "x" are trademarks of SPX FLOW, Inc..

JP_120_USA Version: 03/2016 Issued: 02/2016

COPYRIGHT © 2016 SPX FLOW, Inc.